

St. Mary's School Newsletter

Always faithful to God, ourselves and others in the spirit of the Presentation tradition.

St. Mary's is committed to Child Safety and the inclusion of all children.

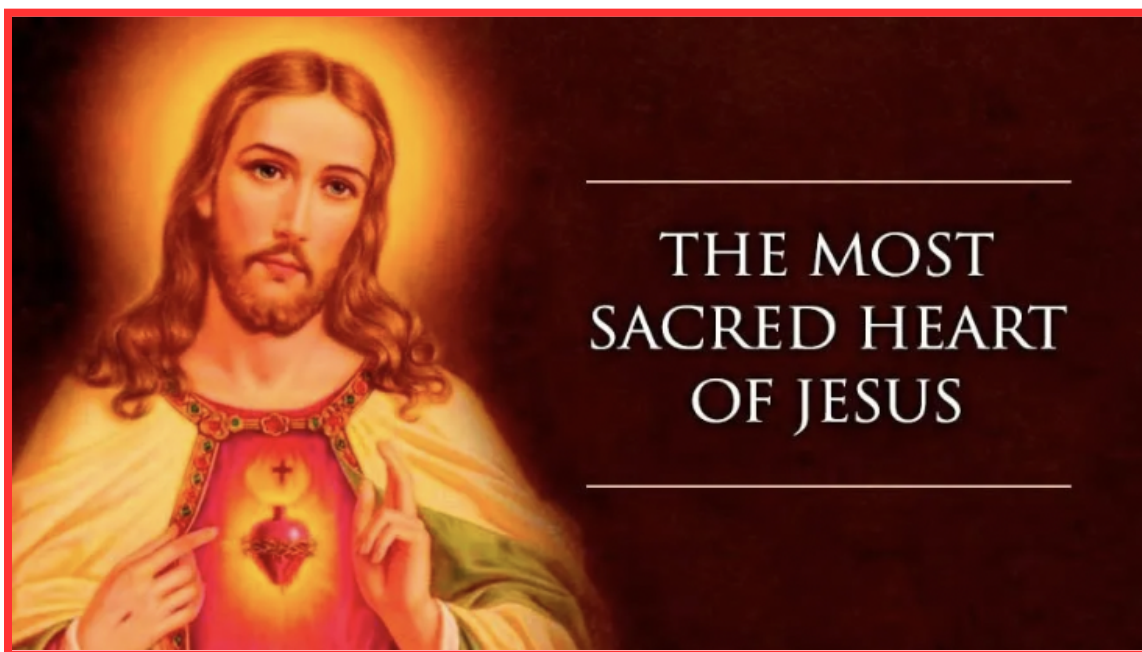
Respect Others - Respect Ourselves - Respect Our Environment

Term 2 Week 9 24th June: **PBIS: Expectations in the Toilets**

Dear Parents/Carers,

Today is the Feast of the Most Sacred Heart of Jesus

The Sacred Heart is one of the most revered symbols in Roman Catholicism, and it specifically represents Christ's love for mankind through his sacrifice on the cross for us.



Phone - 02 60329284

Web - principal@smrutherglen.cathoic.edu.au

75-89 High Street, Ruthergle, 3685
PO Box 146

Office Hours - 8.00am - 4 pm

Weekend Mass Times

Saturday 5 pm - Chiltern (Winter Time)

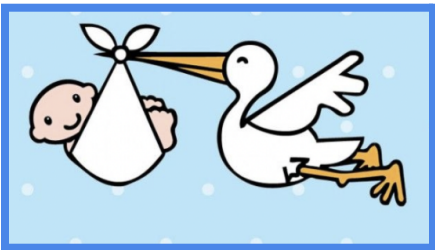
Sunday 9am - Rutherglen

Sunday 10.30 am - Wahgunyah

End of Semester One: Today is the end of Term 2. The students all have had another very productive and busy term. I hope all students and teachers enjoy a well earned break and come back recharged and ready to go for an exciting Term 3 ahead.

END OF TERM PRAYER

We thank you Lord, for this term.
For the challenges, the successes,
and the mistakes from which we have learnt.
Be with us as we spend our time with family and friends.
Give us strength and courage to do what is right;
to be witnesses of our faith.
Help us to be a practical Christian these holidays,
to appreciate what others do for us,
to give time and effort to help others,
to be peacemakers in our family.
Keep us safe in our activities;
give us good rest and good fun.
Bring us back refreshed and ready for a new term.
We thank you for our classmates, teachers, parents
and a community that cares for us.
May we always be conscious of you in our lives.
Amen



Good Luck Jodie: We farewell Jodie Smith today as she goes on leave and prepares for the birth of her 3rd child. We wish Jodie all the best. As already communicated, Mrs Emily Morris, will take classroom duties in Year 6 for the remainder of the year. Again, as a whole school community, we welcome Emily on our staff as a full time member.

New Shade Sail Installed: Yesterday we had our new shade sails installed. This was part of a State Government initiative for all schools being able to apply for a grant of up to \$25,000 to have shade sails installed to provide more shaded areas to utilise as play and outdoor learning areas.



IMPORTANT **Correct Uniform Please**



Could all families please ensure that all students are in the correct uniform. We seem to have lots of very colourful socks appearing lately and students wearing their sports uniform & runners everyday. A reminder that sports days are **Wednesday & Friday**.



We have a very well stocked 2nd hand uniform store at school. See Amanda or Matt for help here.

Please note: School beanies are available to purchase at Brunella's uniform shop, Corowa. A very **sensible** winter choice!

COVID Restrictions

The Victorian Government will continue to provide Rapid Antigen Tests (RATs) for use by students and staff for the remainder of Term 2.

Schools will continue to be provided with and distribute the same weekly quantity of RATs.

Screening requirements

From Monday 23 May 2022, it is recommended RATs are used by students and staff when symptomatic. RATs are also required to be used for 5 days if a student or staff member is a close contact of a confirmed case and they are attending or working at a school.

From Monday 23 May 2022, it is not recommended that non-symptomatic students or staff conduct RATs twice a week in mainstream schools

Students and staff must continue to notify the Department of Health and their school if they return a positive RAT result.

Students and staff who have tested positive for COVID-19, and have completed their 7-day isolation period, now do not need to undertake rapid antigen test (RAT) screening for 12 weeks after their release from isolation. This was previously 8 weeks.

Household contacts

Students and staff who are household contacts of a COVID-19 case are no longer required to quarantine. They can return to school as long as they undertake rapid antigen tests (RAT) 5 times within their 7-day period and wear face masks indoors if they are aged 8 and above unless they have a valid exemption. If any household contact returns a positive RAT result during this period, they must isolate for 7 days and not attend school.

TRANSPORT OF CHILDREN TO SCHOOL BY POSITIVE CASES

A further change to the pandemic orders is that from 11.59pm on Friday 24 June, parents/carers who are COVID-19 positive can leave self-isolation to transport children to or from school or an early childhood service via private vehicle.

The parent/carer must travel directly to and from the school/early childhood service only. They must remain in the vehicle at all times, unless it is reasonably necessary to leave the vehicle to walk the child to and from the entrance of the school/early childhood service safely. They must wear a face mask at all times.



Poppy & Luca



Festival of Healthy Living

Next Term our Yr 4-6 students will be a part of the **Festival of Healthy Living** with other schools in our district. The students attended the launch of the festival this week.



About the Festival for Healthy Living

The Festival for Healthy Living (FHL) is an innovative mental health promotion initiative developed by Royal Children's Hospital (RCH) Mental Health. It aims to promote positive mental health and wellbeing among children, young people and their families by building the capacity of schools and local government to implement arts-based mental health promotion activities. The program uses arts-based workshops in schools, community settings and at local cultural events.

FHL is now in its 23rd year of operation and has been successfully implemented by 38 communities across Victoria – involving over 200 schools and agencies, and reaching over 18,000 young people.

Participating schools

Chiltern Primary School
Rutherglen High School
Rutherglen Primary School
St Joseph's Primary School, Chiltern
St Mary's Primary School, Rutherglen
Wahgunyah Primary School

Project partners

Indigo Shire Council
Regional Arts Victoria
Upper Murray Family Care



FAREWELL: Sadly we farewell Travis Gunning today from our St. Mary's community. Trav and his family are moving back to their home town of Bathurst next term. We thank Neil, Chrissy, Darcy, Shaun and Trav for their contribution to our school.

Congratulations to this week's PBIS Winners

Noah, Steph, Zoe, Zoe, Miller & Matilda



Well done to this week's Classroom Award Winners:

All of 4/5T, Teddy, Harry, Zac, Logan, Lachlan, Emelia-Rose, Ivy & Ella



School Resumes on Monday 11th of July

Have a great weekend holiday break.



Matt

IMPORTANT CALENDAR DATES 2022

Friday 17 June	First Reconciliation 10am
Friday 24 June	Last Day Term 2 for Students (Casual Clothes Day - gold coin donation) 2.30pm finish
Term 3	
Monday 11 July	1st day Term 3
Wednesday 13 July	Country Buddies Orientation visit 9.30am-11.00am
Tuesday 19 July	Meerkat Productions (Incursion TBC)
Thursday 21 July	Rutherglen Kinder Orientation visit 9.30am-11.00am
Wednesday 10 August	Country Buddies Orientation visit 9.30am-11.00am
Thursday 1 September	Rutherglen Kinder Orientation visit 9.30am-11.00am
Friday 16 September	Last Day Term 3 for Students (Casual Clothes Day - gold coin donation) 2.30pm finish
Term 4	
Monday 3 October	1st day Term 4
Monday 24 October	Student Free Day—Staff PD
Monday 31 October	Student Free Day—Report Writing Day
Tuesday 1 November	Melbourne Cup Day
Friday 11 November	Remembrance Day
Thursday 1 December	Student Free Day—Staff PD